

MOVING TO RWANDA

A RELOCATION GUIDE TO A SMOOTH
TRANSITION TO LIFE
IN RWANDA



Welcome to

RWANDA, THE LAND OF A THOUSAND HILLS



Disclaimer

All information provided in this guide book is only for informational purposes. While the information in the book has been verified to the best of our abilities, we cannot guarantee best service from all the service providers featured in the book. Therefore, should you consider using the services, we are not responsible for any bad service from the service providers.

Copyright © January 2024 by Impact Route
All rights reserved

www.impactrouterwanda.com
frontdesk@impactrouterwanda.com
Po.Box. 2337, Kigali, Rwanda
Tel: +250 7888 102 67

Table of Contents

• Disclaimer.....	1
• About this Guide Book.....	3
• Administrative Structure of Rwanda.....	4
• Rwanda Borders and Surface.....	4
• Rwanda Population.....	4
• Languages	5
• Weather in Rwanda.....	5
• Religion.....	5
• Brief History of Rwanda.....	5
• Safety and Security in Rwanda.....	6
• Essential Telephone Numbers.....	6
• Airlines Flying to Rwanda.....	7
• Info Note for Travelers	7
• Visa & Residence Permits	8
• Rwandan Money	9
• Money Exchange.....	10
• Payment Methods.....	10
• Banking in Rwanda	10
• Co-working Spaces in Kigali	11
• Printing Companies	11
• Business Hours	11
• Job Listing Websites	11
• Health Care Services.....	12
• Recommended Hospitals, Clinics and Dental Services in Kigali.....	13
• Insurance Companies.....	14
• Roads & Public Transportation.....	15
• Cabs.....	16
• Moto Taxis.....	17
• Cycling in Kigali.....	17
• Buying, Driving and Maintaining a Car in Rwanda.....	18
• Shopping & Groceries.....	21
• Furniture and Home Accessories	22
• Clothing.....	25
• Finding a House, Neighborhoods & Working with Brokers.....	26
• Home Bills.....	28
• Internet.....	30
• Phone & Sim-Card.....	30
• MTN USSD Codes	31
• Home Staff.....	32
• Pets.....	32
• Hotels, Restaurants, Coffee Shops & Nightlife.....	33
• Schools, Bookstores & News.....	36
• Recreation & Sports.....	38
• Tourism, Events and Festivals.....	42
• Culture & Community	46

About this Guide Book

This is a collection of updated information about day to day life in Rwanda. It takes away all the guesswork for people planning to relocate to Rwanda, newly relocated people and those visiting Rwanda.

Audience of this Guide Book

- **People relocating to Rwanda and their families:** As Rwanda attracts global interest, a lot of individuals and families are relocating to Rwanda. As you prepare to relocate to Rwanda, the information in the book helps you to put in perspective and plan your move accordingly. Once you land in Rwanda, the book guides you as you figure out and navigate your everyday life in Rwanda.
- **Organizations hiring international staff:** This guide book is used by international organizations as a welcome pack for their newly hired international staff in Rwanda. Including the book in the on-boarding package adds to the existing workplace on boarding a more comprehensive orientation to life in Rwanda.
- **Conference attendees:** Beyond attending the conference, some attendees want to understand and immerse in Rwandan life and culture. Unfortunately most of them do not have enough time to spend in Rwanda. The information in the book will help them easily understand general life in Rwanda.
- **Returning Rwandan diaspora:** After being away for sometime and the fast changes happening in Rwanda, it can be daunting for Rwandan diaspora relocating back. This relocation guide book helps them easily reconnect with life in Rwanda and reduce relocation anxiety.

Using The Links in the Book

Most of the services featured in the book have links that lead to either their google map addresses or websites.

Enjoy the read!



Founder and Executive Director at Impact Route



Country General Information

Administrative Structure of Rwanda

- **4 provinces and Kigali City:** The governor leads the province assisted by the province executive secretariat. The Governor of the province is appointed by a presidential order upon approval by the senate. The governor reports to minister in charge of local government
- **30 Districts:** The top leader in a district is the mayor assisted by two vice-mayors. The mayor and the vice-mayors are elected by the district council and can be removed by it as well.
- **416 Sectors:** A 10-member elected sector executive committee headed by the sector executive secretary is responsible for the delivery of public services to the population and provide citizens with administrative documents
- **2148 Cells:** Cells are governed by a cell executive Committee, composed of ten members headed by the cell executive secretary. Cell council members are directly elected by the cell adult residents
- **14 837 Villages:** The village is the lowest administrative entity in Rwanda and village authority members headed by village chief are elected by all adult residents of the village for a five-year term.

Adapted from <https://www.gov.rw/government/administrative-structure>

Rwanda Borders and Surface

Rwanda is one of the smallest countries on the African mainland with a surface of 26,338 square kilometres. It is located in Central / Eastern Africa bordering Uganda in the North, Tanzania in the East, Burundi in the South, and the Democratic Republic of Congo in the West.

Rwanda Population

According to the results from the National Institute of Statistics of Rwanda fifth Population and Housing Census (PHC) conducted in 2022, Rwanda's population is 13,246,394

Religion

According to the 5th population and housing census, Rwanda 2022, Christian religious groups represent 92.81% of the population in Rwanda (Catholic represents 39.91%, ADEPR (21.29%), Protestants (14.56%), Adventists (12.17%), other Christians groups consist of (4.18%), Jehovah's Witnesses (0.7%), Muslims (2%), Other Religions (2%). Those with no religious affiliation represent 3.04% of the population, while traditionalists/animists represent 0.02% of the population. Therefore,

Languages

Kinyarwanda, English, French and Kiswahili are widely spoken in the country. Kinyarwanda is the national language while English, French and Kiswahili are official languages.

Weather in Rwanda

Rwanda climate is pleasantly warm all year round, with cool nights, because of the altitude. The average temperature in Kigali (the capital city) is around 26/27 °C (79/81 °F) during the day and around 15/16 °C (59/61 °F) at night. Rwanda has four climatic seasons: the heavy rain season (late March-early May), light rain season (early September - December), long dry season (early May-early September) and short dry (January-late March).

Brief History of Rwanda

Pre-colonial period

For centuries, Rwanda existed as a centralized monarchy under a succession of kings from the Abanyiginya clan. They ruled through cattle chiefs, land chiefs and military chiefs. The king reigned supreme but the rest of the population - Hutu, Tutsi and Twa - lived in symbiotic harmony.

Colonial Period

In 1899, Rwanda became a German colony and in 1919, the system of indirect rule continued with Rwanda becoming a mandate territory of the League of Nations, under Belgian rule. From 1959 and onwards, the Tutsi minority were targeted, causing hundreds of thousands of deaths and during the following decades sending almost 2 million of them into exile.

Post-Colonial Period

Rwanda achieved its independence in 1962. Unfortunately, the First Republic under President Gregoire Kayibanda and the second one under President Juvenal Habyarimana institutionalized discrimination against the Tutsi and subjected them to periods of massacre. On 1 October 1990, the opposition RPF launched an armed liberation struggle that ultimately ousted the dictatorship in 1994 and ended the Genocide and murders of more than one million Tutsi and moderate Hutu, who opposed the Genocide.

Post-Genocide Period

On 4 July 1994, the RPF formed a Government of National Unity, headed by President Pasteur Bizimungu, bringing together the parties that did not participate in the Genocide. In 2000, Vice-President and Minister of Defence, Major General Paul Kagame was voted in as the President of the Republic to lead the coalition government. On request of the people, President Kagame has been re-elected several times since then and during his time in office, the country has made unprecedented socio-economic and political progress and achieved peace, stability and social cohesion amongst the Rwandan people.

Adapted from

<https://rwandamission.ch/history/#:~:text=In%201899%2C%20Rwanda%20became%20a,million%20of%20them%20into%20exile.>

Safety & Security

[The 2021 Bounce 2021 solo travel Index](#) ranked Rwanda the sixth country among the top ten safest countries for solo travelers in the world after Switzerland (1st), Japan (2nd), Slovenia (3rd), Georgia (4th), Iceland (5th).

Although the general security situation in Rwanda is well under control of the Rwandan Government security apparatus, natural hazards (flood, landslides), road traffic accidents and burglaries do happen sometimes. Therefore common sense should prevail in maintaining vigilance with your personal valuables.

The streets are safe in most areas. During the evenings, there is a military and police presence patrolling most of the city streets which makes the streets even safer.

Essential Telephone Numbers

Emergency (police & fire)	112
Traffic Accident	113
Traffic Police	+250 25257157
Ambulance SAMU	912
Fire Brigade	+250 788 311 120
Gender Based Violence	3512
Water (WASAC toll free)	3535
Electricity (REG toll free)	2727
King Faisal Hospital (www.kfh.rw)	+250 252583203 / 252589578
Legacy Clinics	+250788 382 000



Flying to Rwanda



Airlines Flying to Rwanda

Rwandair

With the IATA code WB, Rwandair is the Rwanda national flag carrier. Rwandair flies from its hub in Kigali International Airport to airports in East Africa, Central Africa, West Africa, Southern Africa, Europe, the Middle East and Asia.

Other big airlines flying to Rwanda are:

- KLM (KL),
- Qatar Airways (QR),
- Turkish Airlines (TK),
- Ethiopian Airlines (ET),
- Kenya Airways (KQ),
- Brussels Airlines (SN),

INFO NOTE FOR TRAVELERS

YELLOW FEVER

- To enter Rwanda, a Yellow Fever vaccination certificate is not required to travelers (Residents / Non-Residents) coming from Yellow Fever non-endemic countries and without an active transmission outbreak of Yellow Fever.
- For travelers (Residents / Non-Residents) coming from an active Yellow Fever transmission outbreak country or have recently (within 24 days) visited an active Yellow Fever transmission outbreak country, the following instructions are applied:
 1. A valid Yellow Fever vaccination certificate
 2. Without fever (less than 38.5oC)
 3. Consents to self-report for any symptoms for 6 days
 4. A traveler (Residents / Non-Residents) with an invalid Yellow Fever vaccination certificate (less than 10 days after vaccination) will be quarantined until the certificate becomes valid
 5. A traveler (Residents / Non-Residents) coming from a country with active Yellow Fever transmission or known Yellow Fever endemic country without a Yellow Fever vaccination certificate will be vaccinated upon entry.
 6. No entry will be allowed to a traveler (Residents / Non-Residents) who does not consent for preventive measures.
 7. The cost related to quarantine and/or the vaccination upon entry will be covered by the traveler.

[See here WHO list of Countries with risk of yellow fever transmission and countries requiring yellow fever vaccination](#)

Covid-19

The following Covid-19 travel guidelines and procedures are in place for travelers in Rwanda. These guidelines are regularly reviewed and revised in light of health conditions.

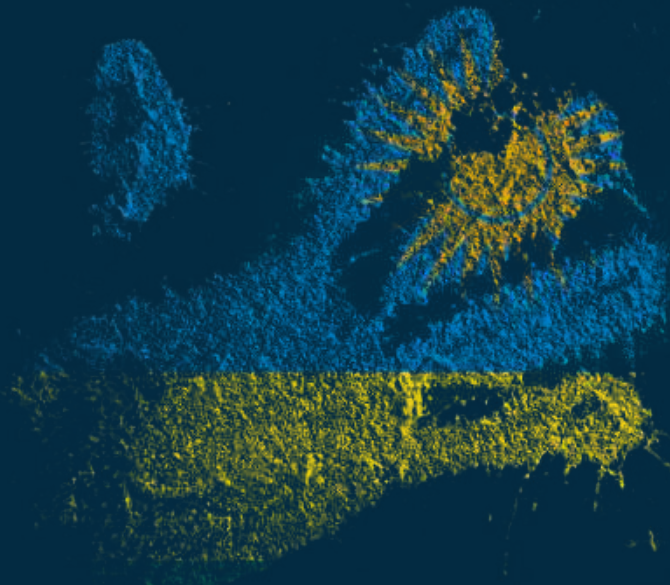
1. Covid-19 testing is no longer a requirement prior to boarding the flight to Rwanda. However, regular Covid-19 testing is encouraged.
2. The Passenger Locator Form is no longer a requirement before departure.
3. An additional Covid test is no longer required upon arrival at Kigali International Airport.
4. Face masks are no longer mandatory in Rwanda, but people are encouraged to wear a face mask in public indoors/closed spaces.
5. A Covid test is no longer a requirement to depart Rwanda by air. However, Covid testing (at own cost) is available for all travellers whose final destination requires one at health centres and other designated sites.
6. All Rwandan travellers aged 12 years and above must show proof of full vaccination before departing Rwanda by air. Fully vaccinated for people aged 18 years and above means having two doses and a booster when eligible (administered 3 months after second dose.)

Visa

Nationals of all countries receive visa on arrival at Kigali International Airport and all land borders. As of November 2nd 2023 All African nationals are now eligible to enter Rwanda visa-free. In President Kagame's words " Any African can get on a plane to Rwanda whenever they wish, and will not pay a thing to enter our country."

Residence Permits

Requirements to change visitor's visa entry into a temporary resident visa vary depending on the reason and purpose of your stay. For more information about requirements, eligibility and the validity of resident permits please follow this link <https://www.migration.gov.rw/our-services/permit>



Rwandan Money

Rwanda currency is the Rwandan Francs (FRW). Only Rwandan francs are used to buy everything in the local markets, supermarkets, bars, coffee shops and restaurants. But hotels and other touristic places accept American dollars (Most hotels and tourism activities prices are in American dollars)

Five thousand (5000) is the biggest banknote / bill followed by two thousand (2000) and one thousand (1000). The smallest banknote is five hundred (500). The biggest coin is one hundred (100) followed by fifty (50) and then comes twenty (20), ten (10), five (5) and the smallest coin in one (1). Please note that 1, 5, 10 are less used. You would probably use them in banks.



Money Exchange

To change your money to Rwandan francs you need to go to either a forex bureau or a bank. Please note that forex bureaus offer better rates than banks. You will find forex bureaus in most of the towns in Rwanda. In Kigali, most of the forex bureaus are in Kisimenti neighborhood, Kigali city center, Kigali Heights and Nyabugogo. Please note that foreign small bills will be changed at a way lower rate. It's recommended you bring big bills (\$50 & 100). Also, forex bureaus do not accept USD soiled notes (dirty and slightly cut). Here are some of the recommended forex bureaus that offer good rates:

- [Shahansha Forex](#) at Nyarugenge KN 84 st, Kigali
- [Rebex Forex Bureau](#) at Remera, Kisimenti KG 11 Ave, Kigali

Paying Methods

- **Debit cards** are widely accepted in hotels, restaurants and supermarkets in Kigali. You can also withdraw money from ATMs scattered across the country.
- **Cash:** Though Rwanda is striving to become cashless, some places like local markets and small shops will require you to pay in cash.
- **Mobile Payments:** After registering your sim-card either with MTN or Airtel, remember to ask them to activate mobile money on your sim-card. With mobile money you can now pay moto taxis, restaurants, supermarket, water bills and electricity.

Banking

According to the [National Bank of Rwanda](#), there are 9 licensed commercial banks, 3 microfinance banks, 1 development bank and 1 cooperative bank. (The list below follows alphabetical order, therefore do not use it to grade the banks).

Commercial Banks

1. Access Bank Rwanda Plc
2. Bank of Africa Rwanda Plc
3. Bank of Kigali Plc
4. Banque Populaire du Rwanda Plc
5. Ecobank Rwanda Plc
6. Equity Bank Rwanda Plc
7. Guaranty Trust Bank Rwanda Plc
8. I&M Bank Rwanda Plc
9. NCBA Bank Rwanda Plc

Microfinance Banks

1. Unguka Bank Plc.
2. Urwego Bank Plc.
3. AB Bank Rwanda Plc.

Development Bank

1. Development Bank of Rwanda Plc.

Cooperative Bank

1. Zigama CSS

Opening a Bank Account

With the right paperwork (which may vary from bank to bank) and initial outlay (which also varies depending on the type of the account you want to open) foreigners can open more than one bank account in FRW (Rwandan francs), USD and EURO. Please note that some banks will require a resident permit or a business registration certificate for foreigners to open a bank account.

Also according to the [National Bank of Rwanda](#) there are 416 Microfinance Institutions - UMURENGE SACCOS, 18 Microfinance Institutions - Public Limited Companies and 22 Microfinance Institutions - Non UMURENGE SACCOS.



Finding Work Office in Kigali

Business offices in Kigali can only be in office buildings. Depending on the size of your team, you can either find a private office or work alongside like-minded professionals in co-working spaces sprouting in Kigali. Here are some of the co-working spaces where you could reserve your own desk and private office.

- [Westerwelle Start up Hause Kigali](#)
- [Norrskan Kigali House](#)
- [Impact Hub Kigali](#)
- [Regus Kigali City Tower](#)
- [IT Parks Kigali](#)
- [WAKA Town and WAKA Kimi](#)
- [OfficePhase Kigali Shared Office Spaces](#)

Job Listing Websites

If you are moving to Rwanda planning to do business and hire people here is a list of websites where you could post your job adverts. Please note that some of these websites you have to pay to post your adverts.

- [jobinrwanda.com](#)
- [rwandajob.com](#)
- [jobweb Rwanda.com](#)

Business Hours

Government offices open between 9:00 am and close 5:00 pm with a short lunch break between 12:00 pm and 2:00 pm. On Fridays, government offices and some other organisations work a half-day until about 1:00 pm. Most shops and banks do not break for lunch. Some banks close early at 3.30 pm on Saturdays, others close at 7:00 p.m. Some banks are open on Sundays as well. Depending on the neighbourhood, some shops stay open until late night.



Printing Companies

In your business you will definitely need printing for various reasons. Here are some of the best printing companies in Kigali.

Tel: +250 788 158 800

- [Techno Market Print House](#)



- [Maran Design Ltd](#)



Tel: +250 785 579 666

A close-up portrait of a Black woman with long, wavy dark hair, smiling warmly at the camera. She is wearing a white lab coat over a bright blue button-down shirt. A stethoscope is visible around her neck. She is holding a pair of glasses in her right hand. The background is a blurred indoor setting with large windows.

Health Care Services & Insurances

Medical Facilities

Rwanda is internationally recognized for its success in offering universal access to healthcare. With over 84% of Rwandans insured by Community Health Insurance "Mutuelle de Santé" Rwanda has ensured that her citizens have access to primary health care. The country currently operates a well-functioning, decentralized healthcare public service system comprising 1700 health posts, 500 health centers, 42 district hospitals, and five national referral hospitals. Rwanda also has a vibrant private health services sector, which comprises of 2 general hospitals, two eye hospitals, 50 clinics and polyclinics, eight dental clinics, four eye clinics, and 134 dispensaries.

Adapted from [Health Services | Official Rwanda Development Board \(RDB\) Website](#)

Water and Food-Borne Diseases

Currently there are no reports of any water and food-borne epidemic on Rwandan soil. However, tap water must be boiled before drinking. It is strongly recommended to purchase bottled water for drinking (Jibu and Inyange sell refillable 20 liters plastic containers that you could put on your water dispenser. Some feel more comfortable with brushing their teeth with bottled water as well. Swimming in the lakes (like Lake Muhazi for example) places you at risk for the bilharzia parasite (schistosomiasis). However, many expats do swim in Lake Kivu (Gisenyi and Kibuye). Bilharzia treatment is available in local pharmacies.

Vaccination

Proof of Yellow Fever vaccination is required upon entering the country. Make sure you bring your updated vaccination card. Hepatitis A & B and Typhoid vaccinations are recommended. Malaria is a risk in Kigali as well as in other parts of the country (especially in the eastern and south-western parts). Using mosquito nets is highly advisable. Depending on the length of your stay, you should also consider taking anti-malarial medication, upon the advice of your physician. Note that chloroquine is not an effective antimalarial here. Mosquitoes tend to be most active from dusk to dawn. If you are prone to bites, insect repellents are available in most stores here.

Recommended Hospitals, Clinics and Dental Services in Kigali

Here below is a list of some good dental clinics in Kigali drawn from September 25, 2021 Joan Ngigi article in the living in Kigali website entitled "*Dentists in Kigali: The 12 Best Clinics in 2021*". [Follow this link to see the whole list of 12 best clinics in Kigali.](#)

Kigali Adventist Dental Clinic

Location: KG 567 St, Kacyiru
Phone Number: +250788777720
Opening hours: 8 am – 5 pm

Gentle Dental Clinic

Location: KN 2Ave TOWN / CHIC BUILDING F1, Kigali.
Phone Number: +250783492996
Opening hours: Weekdays 8:00am – 4:00pm; Saturday 9:00am – 2:00pm

Deva Medical Center

Location: KG 9 AV 519 Street No 6 Nyarutarama
Phone Number: +250788333111
Opening hours: 8:00am – 3:45 pm;
Sundays – Closed

ADA Dental Clinic

Location: KG 552 St, Kigali
Phone Number: +250788688184
Opening hours: 8:00 am – 5:00 pm;
Weekends – Closed

Hôpital La Croix du Sud

Location: KG 201 St 7, Gasabo
Phone Number: +250785246882
Opening hours: 8:00 am – 5:00 pm

Advanced Dental Clinic

Location: KG 11 Ave, Remera
Phone Number: +250789313200
Opening hours: Weekdays 8:00am – 6:00pm; Weekends 9:00am – 4:00pm

Insurance Companies

According to the National Bank of Rwanda there are 2 public insurers, 12 Private insurers companies and 1 micro insurer.

Public Insurers

1. RSSB - Medical Scheme www.rssb.rw
2. Military Medical Insurance (MMI) www.mmi.gov.rw

Private Insurance

1. SONARWA General Insurance Ltd www.sonarwa.co.rw
2. SONARWA LIFE ASSURANCE COMPANY LTD www.sonarwalife.co.rw
3. SANLAM ASSURANCES GENERALES LTD www.rw.sanlam.com
4. SANLAM ASSURANCE VIE LTD www.rw.sanlam.com
5. PRIME INSURANCE LTD www.prime.rw
6. PRIME LIFE INSURANCE LTD www.prime.rw
7. MUA RWANDA www.mua.rw
8. OLD MUTUAL INSURANCE RWANDA PLC www.oldmutual.rw
9. RADIANT INSURANCE COMPANY LTD www.radiant.rw
10. BRITAM INSURANCE COMPANY RWANDA LTD www.rw.britam.com
11. BK GENERAL INSURANCE COMPANY LTD www.bkinsurance.rw
12. MYFAIR INSURANCE COMPANY RWANDA LTD www.rw.myfair.africa

Micro Insurer

1. RADIANT YACU LTD www.radiantyacu.rw

A photograph of a paved road with double yellow lines, curving through a dense forest. The trees have vibrant autumn foliage in shades of yellow, orange, and brown. Sunlight filters through the canopy, creating a warm, golden glow. A semi-transparent dark blue horizontal band is overlaid across the middle of the image, containing the title text.

Transportation & Getting Around



Roads & Public Transportation

Bus Terminals and Traveling Out of Kigali

Presently there are no railway lines in Rwanda. The public transport services are solely road based (except when traveling to Nkombo island) and the Kigali -Rusizi Rwandair flights. Bus terminals are usually well organised, with each bus company having a separate office and, generally, destinations and fares listed on the wall of each office. Buses usually depart from the office you bought your ticket at. Nyabugogo, about 2 km north of the city centre, is the biggest trans-provincial bus terminal. At Nyabugogo bus terminal you will find buses going to all corners of the country.

Public Transport in Kigali

There are mini-buses and bus services covering the Kigali city. You can either get in the bus at bus stops or bus stations "Gare". While Destinations and routes are marked by the colours of the buses and a screen at the front, it is advised to always ask the driver or the passengers which destination they are heading to.

Tap&Go Cards

Tap&Go are electronic cards that all people in Kigali use on all public buses to pay transport fare. Tap&Go cards can be bought from any Tap&Go service agent (You will find the agents at most of the bus stops and all bus parks). The same service agents will help you to load the card with money. As you get in the bus you tap it on the card reader at the bus entrance and you enjoy your ride!

N.B: Please note that buses in Kigali will not accept cash. You could also use Tap&Go card to pay for your bus fare travelling to other provinces out Kigali.

Taxis/ Cabs

Taxis/ cabs are expensive compared to other means of transport. There are two main taxi service providers in Kigali:

- **Yego** Cabs are white cars with an orange stripe. To order a taxi with Yego cabs you call their toll free number 9191 and then speak to the Yego agent (in either Kinyarwanda, English, or French) and provide your location. You will then receive a free SMS text message with the license plate number, driver's name and phone number within a few minutes. Yego meter automatically calculates the fare for a trip based on the distance traveled.
- **Move by Volkswagen**
To order a Move by Volkswagen taxi you call 1010 and speak to their agent or register in their phone application. Move also has a meter that automatically calculates the fare for a trip based on the time and distance traveled.





Moto Taxis

Motorbike taxis, known as 'motos' in Rwanda, are the most used form of transport in Kigali. They are quick, cheap, convenient (especially when in rush and there is traffic in the morning and evening). Moto drivers usually work from 'stations' – junctions and roadside areas where they wait for passengers. You can also hail a passing moto from the road

Though all moto drivers in Kigali carry an extra helmet for their passengers, owing to safety and hygiene some people buy their own helmets which they carry with them and use whenever they want to take a moto.

Moto Fees

Moto fees start at 400 FRW. Moto prices tend to be higher in places where there are low vehicle mobility and lower in places with high vehicle mobility. This is because, when there is high vehicle mobility the moto driver easily find a passenger after dropping you and if the mobility is low the fees have to cover round trip. In Kigali the highest price you would pay for one moto trip is 2500 francs.

NB: When you see your moto driver over speeding (which they do most of the time), please tell them to slow down. Some of them will understand basic English. But to make sure they understand you tell them in Kinyarwanda **Genda buhoro buhoro = Go slowly**



Cycling in Kigali

Good roads, light traffic (not in the rush hours "6:30 - 8:30 am and 5:00 to 7:00 pm") and cool climate make Rwanda a great country to cycle in. Apart from the Kigali busy roads, there are also many trails that will help you exploring Rwanda's countryside on a bike which is an authentic and rewarding way to interact with rural population and natural beauty.

Buying a Bicycle

According to Conor Walsh article in the living in Kigali website published on *September 25, 2021* below is the three best places you could buy a bicycle.

- [The Shop](#): They sell bicycle parts, accessories and provide professional repair and maintenance services.
- [Titanium Smart Life](#): They sell bicycles, treadmills, spinning bikes and related accessories.
- [Hope Line Sports](#): Located at KN 59 St, Kigali they can also be reached at 0788 438 123. They sell bicycles and different sport materials

Rent a Bicycle

If you do not want to own a bike but want to ride one then renting is option. Here are a few companies that provide bicycle rentals.

- [Kigali Rides](#): Located in Kanombe close to the airport, their services include bicycle rentals, bicycle tour, bicycle repair and bicycle classes
- [Kairos Cycling](#): Their 2019 Giant Talon 2 with 18 speeds and 29in wheels bicycles come different sizes. [Follow this link to rent Kairos bicycles.](#)
- [Gura Ride](#): This is a bicycle sharing app now operating in Kigali city, Musanze and Rubavu. Bicycles are docked at stations throughout the cities. To unlock a bicycle at the station, you will have to download the app and scan the bicycle. At the end of your trip you will put the bicycle back into the next dock station, and pay a fixed fee based on the time and distance used.

Buying, Driving and Maintaining a Car

Driving Hand

Unlike other East African Community (EAC) countries like (Uganda, Tanzania and Kenya) that drive on the left-hand side of the road, Rwanda drives on the right side of the road. This means that the vehicle used within Rwanda must be right-hand drive.

Road Camera and Traffic Fines

Since 2019, hundreds of cameras have been put up in different places across the country to reduce speeding and fine over speeding vehicles. Beside the black striped cylindrical cameras permanently installed on the roads, the traffic police also uses mobile cameras. When you over speed the speed limit sign the camera scans your plate number and sends the ticket to the telephone number registered with the vehicle. When you go beyond 3 days without paying the fine an extra 10 000 francs will be added to the fine.

Beside the automatic text, you could also check the traffic fine by dialing *127# press yes, select 2, and press yes, write your number plate press yes, type in your TIN number (you will find this in your car log book) and press yes, the amount of the fine will show in your screen. You could also check the traffic fine online at <https://fines.police.gov.rw/>. To pay the traffic fine, you go to irembo services website (https://irembo.gov.rw/home/citizen/all_services) and choose traffic fine.

Buying a Car / Truck

There are several ways to buy cars in Rwanda. One of the cheapest way to buy a used car is to buy it from an expat leaving the country. Expats leaving the country post their cars on various [expat Facebook forums](#). You could also buy a used car from local car markets. Here are some of the website you could visit: [Rwanda car market](#), [Carisoko](#), etc.. There are also various car dealerships that import used and brand new cars from Japan, German, Korea etc.. Here are few of them: [Rwandamotor](#), [Akagera Motors](#), [Sar Motor](#)

Annual Car Inspection

Every car in Rwanda must be inspected by the Rwanda traffic police mechanical inspection centers once a year for private cars and twice a year for business cars. To get an appointment for your inspection you go to irembo https://irembo.gov.rw/home/citizen/all_services and choose motor vehicle inspection and follow instructions.

Parking Fees

MISIC manages the car street parking. After you have parked, a short message (SMS) is sent to the car owner's phone number notifying you that your car is being checked-in a parking lot at a specified location. As you start your car to leave the MISIC staff, usually in light blue and black uniform checks you out and ask you to pay the bill. 100 francs is the hourly rate.

Car Repair

It is very easy to find automobile repair shops / garages in Kigali and other towns in Rwanda. But finding a liable and trustworthy mechanic that can provide quality and timely service could be a challenge. Here below are some of the recommended car repair shops in Kigali.



PITSTOP - KIMRONKO
TEL: +250 781 605 661



AUTOXPRESS RWANDA
TEL: +250 787314 574



MR. SERVICE
TEL: +250 787 673 434



GORITECH SERVICES
TEL: +250 784 676 968



ATECAR GARAGE
TEL: +250 788 300 497

A small, silver metal shopping basket is positioned on a laptop keyboard. Inside the basket are two paper shopping bags: a red one in the back and a green one in the front. Both bags have white rope handles. The background is a blurred laptop keyboard.

Market, Groceries, Home Accessories & Clothing

Shopping & Groceries

Most products are available in Rwanda, but plan to pay double to three times the price for products imported from Europe, Asia or the United States. Locally grown fruits and vegetables are often very cheap when in season and if bought from local markets.

- [Kimironko market](#) is the most popular and one of the biggest local markets in Kigali. To avoid having to deal with many vendors wanting to sell you products it's advised to find one or two vendors and get their phone numbers. Every time you go to the market you call them and buy from them. This will also save you time to bargain the prices.

Supermarkets and Small Shops

There are hundreds of supermarkets and small shops scattered across the city of Kigali. There is at least one or two supermarkets and many small shops in a walking distance in every neighborhood. Here are some of the biggest supermarkets in Kigali:

- [T2000](#)
- [Simba Supermarket city center](#), Simba Supermarket Kimihurura,
- [La Galette in the city centre](#) and in Nyarutarama (MTN Centre),
- [Sawa Citi](#)
- [Igihozo Supermarket](#)

This [Google map link](#) has a good overview of various supermarkets in Kigali.

Worth noting: Since September 2008, there has been a nationwide ban on **plastic bags**. Luggage is searched at the airport to make sure plastic bags do not enter the country; and shops provide you with paper bags instead.

Online Shopping

According to [Simon Kemp 12 February 2021 report in datareportal.com](#) there are 4.12 million internet users in Rwanda. Internet access and speed are improving, driven by the rollout of a national 4G LTE network and fibre optic lines. As a result of the growing internet facilities the number of online market websites is continuously increasing. Here are some of the Rwandan websites you could use to shop online:

- [Kasha.rw](#)
- [Olado.rw](#)
- [Kikuu.com](#)

Food Delivery Websites

Like shopping websites, food delivery services are taking up especially in Kigali where people are busier. Here are the most used websites and apps.

- [Vuba Vuba](#)
- [Rush foods](#)

Please note that you will need to download one of the above services app on your mobile phone to be able to order your food



Furniture and Home Accessories

Sofa, Bedframes, Tables

Furniture range from luxurious imported to locally artisanal. Locally made sofas range between \$500 to \$1500. Imported sofa's range between \$800 to \$3000. There different woodworking workshops where you could buy locally made good quality bed frames, dining room sets and cabinets. You can either buy ready-made furniture or have pieces made to your specifications (it is best to present a sample or picture of what you want to avoid any surprises). Here are some of the places you could try:

1. [Gisozi Gakinjira](#)
2. [Furniture shops section on KN 3 Rd between Sonatube & Rwandex](#)

You also find imported furniture in the following shops

- [Danube](#)
- [Simba Center](#)
- [Nobili Design](#)

Interior Décor

Interior design and stylish artisan furniture created using traditional techniques can be found at:

- [Umutako Iwacu](#): Tel +250 784 572 197.
- [Go Bananas](#): Tel: +250 786 315 202

[Toddle Care](#) makes a range of high quality Rwandan made kids furniture, toys and educational accessories. They can be reached at +250 788 312 364.

Home Appliances and Accessories

Most of the supermarkets will also have a section for home utensils and appliances like (washing machines, microwave ovens, water dispensers, refrigerators, cookers etc..) Here is a list of places you could buy your home utensils and appliances in Kigali:

- [T2000 \(City Center\)](#),_
- [Simba Supermarket \(City Center\)](#),_
- [Igihozo Supermarket \(Kimironko\)](#)
- [Hotpoint Rwanda](#)



Clothing and Designers

Stores in the city center and Kigali Heights have some selection of clothing. However, purchasing imported clothing can be expensive in Kigali. If you can, it's recommended you bring your essential clothing with you from your home country. If you are a fan of colorful kitenge patterns, you can get clothing made inexpensively in Kigali. Rusi (+ 250 785334647) is one of the tailors in Kimironko that you can use to make nice shirt or dresses.

If you want more fashionable and nice made in Rwanda cloth here are some of the best fashion designers and shops that you can try.

Local Fashion Designers

- [Mporefashiondesigner](#): +250 788 236 033
- [Mazeze Couture and Design](#): +250 0788324770
- [Haute Baso](#): +250 784 050 316
- [Moshions](#): +250 788 645 543
- [House of Tayo](#): +250 784 058 996
- [Inzuki Designs](#): +250 781 600 160
- [UZI Collections](#): +250 785 686 996
- [Sonia Mugabo](#): +250 738 303 148
- [Rwandan Clothing](#): +250 786 134 128
- [Touch of Rwanda](#): +250 788 619 424
- [Ikamba Apparel](#) : +250 787 506 231

UZURI K&Y

Uzuri K&Y is a Rwandan eco-friendly footwear company founded by two Rwandan ladies. Uzuri makes beautiful female, male and children sandals using recycled materials.

Phone: +250 780 460 007

Email: customersupport@uzuriky.com





Finding a House, Neighborhoods & Working with Brokers



Street Numbers

In 2013 the city of Kigali launched street and house numbers address system coded according to district names as follows, KN for Nyarugenge, KK for Kicukiro and KG for Gasabo. Other abbreviations include RD for road, AV for avenue, ST for street. Street and house numbers are still quite new in Rwandan cities and they are not widely used to give directions. Most people use landmarks (eg: MTN Centre, RDB, Convention Centre, a big yellow house, etc.) when giving directions.

Choosing Your Neighborhood

Depending on neighbourhoods apartments in Kigali could be more expensive to rent than houses. Kimihurura, Rugando, Kacyiru, Rebero, Kiyovu, Nyarutarama, Kagugu Gacuriro, Kibagabaga are the wealthy, expat populated and expensive neighborhoods in Kigali. In these neighborhoods the apartment and house rent ranges between \$800 to \$3000.

Living together with other (young) professionals in a shared house may also be an interesting and affordable option. On different expat Facebook groups there are usually posts of people looking for house mates.

Working with Brokers

There are individual affordable brokers in different neighborhoods that you could use to buy or rent a house. Though they might not have websites and online visibility, local brokers do very good job finding houses. But you just need some patience as sometimes they will try to convince you to go for houses that do not meet your requirements.

The amount of commission varies but usually it's half of the month's rent (for rent) or 10% of the total amount you have paid. It is advisable to negotiate and agree on their pay before you using a broker.

Home Bills

Water

When searching for a house, check that the water pressure is adequate, that the house has a water tank in good condition, and that the water heaters are large enough to fill a bath.

At the end of each month a WASAC (Water and Sanitation Corporation) staff comes and checks your water meter and leaves a bill that you have to pay before the end of that month.

You can pay water bill through Banks (GT Bank or Bank of Kigali) or pay through mobile money transfers. Dial *182#, choose pay bill and follow other instructions.

You can also check your water bill with your mobile phone by opening the sms menu, typing the word WASAC, leaving a space, entering the account number and sending the sms to 3123. You will then receive an sms with details.

Electricity

In Kigali, there are mostly 220/240-volt electrical circuits. Plugs are mainly 2-pin, however some houses have the UK 3-pin plug. 3-pin adaptors are available in the markets and shops.

Electricity is bought in advance, essentially, it is a prepaid service, so don't expect bills to come at the end of the month. Check your usual consumption at the beginning of your stay, to be able to calculate when you need to buy more to avoid having the service cut, or check the cash power balance on the meter at the house. You can buy cash power from official vendors in some supermarkets, use a local mobile banking system or pay through mobile money transfers. Dial *720*1# and follow instructions.

The power supply in Kigali can be unreliable and certain areas experience brief power cuts. In all cases, it is advisable to keep a torch and a supply of candles (and matches) somewhere easily accessible in your house. You could also consider buying solar lamps. Due to voltage fluctuations, it is also advisable to purchase a small number of surge protectors for your electrical appliances.

Community Security Contributions

In most neighbourhoods you will be asked to contribute to the village (the lowest level of local government in Rwanda) security. The monthly contribution is about 2000 or 3000 francs depending on the neighborhood. It is advised to know the chief of your village. He or she is responsible for the area you live in and will be your first person of contact in case of any problems in the neighbourhood (noise pollution, garbage, damaged roads, theft, etc.)

Trash Pickup Fees

The monthly fees for trash pick up ranges between 3000 and 5000 francs depending on the neighbourhood. In most neighborhoods trash truck comes once a week. To know the days the truck comes, you ask your neighbors or the village leaders.

Satellite TV

Here below are the contacts of the four licensed television service providers operating in Rwanda. Access must be purchased from various packages including a range of news, entertainment, films and sport channels.

Startimes,

- Tel: +250 788 156 600

DSTV

- Tel: +250 788 187 900

Canal+

- +250 784 764 266

AZAMtv Rwanda

- Tel: +250 728 502 002





Internet

There are currently various internet service providers in the country:

- **Canalbox Rwanda,**
- **Mango Telecom etc.**
- **MTN Rwanda,**
- **Airtel Rwanda,**
- **ISPA,**
- **4G Square,**
- **Liquid Telecom**

The providers offer different deals and packages and it is recommended to compare the latest offers before choosing. Some offer simple modems with a sim card that create a wireless network.

You can also access internet using your mobile phone when connected with either MTN or Airtel. To activate bundles, internet packs and check the balance with MTN you will dial *345# and then follow the instructions. To activate bundles, internet packs and check the balance with Airtel you will dial *255# and then follow the instructions

Phone & Sim-Card

There are two mobile phone operators in Rwanda, MTN and Airtel Rwanda. MTN and Airtel sim-cards can be purchased at any of the MTN and Airtel outlets scattered across the country and at Kigali International Airport.

Register your Sim-Card

Note that at the point of purchase and register your Sim Card you will need to show your passport, hand over a copy of your passport and fill out a registration form.

Buy Minutes and Check Balance

Both for MTN and Airtel you check balance by dialing *131#. To recharge by voucher you enter *130*<voucher PIN>#. Vouchers are available for 100-5000 RWF. Be aware that as a non-national you are only allowed to register one SIM card per provider on your passport.

Register with Mobile Money

Beyond making calls, texting and internet, you can register your sim-card with Mobile money or Airtel Money to send and receive money, top airtime, pay bill, purchase electricity and other goods and services.

Some USSD Code

MTN

1. Buying airtime with MOMO to your number ***182*2*1*1*1*amount*MOMO pin# press yes**
2. Buy airtime with MOMO for another MTN number ***182*2*1*1*2*amount*phone number*MOMO pin# press yes.**
3. Check airtime balance ***131# press yes.**
4. Check your MOMO balance ***182*6*1* your momo pin# press yes**
5. Activating airtime into minutes(one day) ***140*1*choose amount & minutes, press yes.**
6. Activating airtime into minutes(one week) ***140*2*choose amount & minutes, press yes.**
7. Activating airtime into minutes(one month) ***140*3*choose amount & minutes, press yes.**
8. Activate airtime into minutes for international calls ***140*7*choose duration*amount# press yes.**
9. Buy internet with MOMO ***345# press yes, choose internet package, press yes, choose duration, press yes, choose amount & internet MB, press yes.**
10. Check your internet data on your phone ***345*5# and press yes**
11. Buy electricity with MOMO ***720*1* and follow instructions. Please note that you will need your electricity meter (cash power) number along the process**
12. Pay water bills with MOMO ***182*3*5* and follow instructions. Please note that you will need your water meter number along the process**
13. Transferring money to another number (person) ***182*1*1*receivers phone number* amount*your momo pin# press yes.**
14. Paying to a vendor' momo code ***182*8*1*vendor's code*amount your want to pay*your momo pin# press yes.**
15. Check traffic fines ***127# select traffic fines, press yes, put your car plate number, press yes, add your car TIN (it is on your yellow log card), press yes.**

Home Staff

Domestic Help

Hiring domestic staff is not expensive but finding good and reliable staff (by expat standards) can be a challenge. Most expats have one domestic helper; the domestic helpers can do cleaning, washing and ironing, and some are also able to cook or work in the garden. A five or sometimes six-day week is usual but it will be for individuals to agree on the exact working conditions. The domestic pay rate ranges between 25000 to 100 000 francs per month depending on the amount of work they are tasked to accomplish and whether they live with you or not.

The [Expats in Rwanda](#) and [Living in Kigali](#) Facebook forums are always good sources of information. Many expat families who leave the country will post recommendations letters for their staff on different social platforms.

Security Guards

While Kigali is a safe city some expats have guards. You could either find an individual guard who could also help you with gardening or use security guard companies. Here is a list of some of the security companies:

- [RGL](#)
- [ISCO Security](#)
- [GardaWorld](#)

Hire a Driver

If you have just moved and bought a car it's recommended you hire a driver to help you in your early days as you learn roads and get used to driving in Rwanda. Like other home staff, The [Expats in Rwanda](#) and [Living in Kigali](#) Facebook forums are always good sources of information about good drivers.

Pets



[WAG](#), a non-profit, volunteer run initiative dedicated to improving the lives of dogs in Rwanda, has resourceful information about importing and exporting pets in or out of Rwanda. The website also has recommendations on airlines to fly with and guidelines to transport your pet on the plane.

Lost and Found Pets Rwanda

[Lost and Found Pets Rwanda](#) is a Facebook group that was created to help reunite pets with their owners, rescue and help re-homing them. This Facebook group will be one of the best way to start the search of your lost pet and share information about found pets.

Vets in Rwanda

[PETS + Ltd.](#)

PETS + Ltd. is a Rwandan-based company providing a variety of pets products & services; veterinary care, dog walking & training, boarding and grooming. The Veterinary Clinic is located in Niboye, Kicukiro & the Training Facility is located in Kagugu, Gasabo.

Contact

Email: Info@petsplusltd.com

Tel: +250 782 824 489

[New Vision Veterinary Hospital](#)

New Vision has a clinic in Kigali and Musanze which is equipped with lab equipment and an x-ray machine. They are able to deal with a variety of issues and the lead vet, Jean Bosco, specialises in orthopaedics. The clinic sees animals on an appointment only basis and they do house calls as well if necessary.

Contact

Tel: 0780 836 952



Hotels, Restaurants, Coffee Shops & Nightlife

Hotels

With Rwanda striving to become the hub of international meetings, incentives, conventions and exhibitions, hotel services have significantly grown to much higher standards.

Currently Rwanda has 8 hospitality facilities(Hotel-lodges) that are ranked "Five Star":

- [Bisate lodge](#),
- [Kigali Serena Hotel](#),
- [Kigali Marriott Hotel](#),
- [Four Points by Sheraton Kigali](#)
- [Radisson Blue Hotels](#),
- [The Retreat](#),
- [Singita Kwitonda Lodge, Kataza House](#),
- [One and Only Gorilla Nest](#)
- [One and Only Nyungwe House](#).

Other good hotels include:

- [Hôtel des Mille Collines](#)
- [Lemigo Hotel](#)
- [Heaven Restaurant & Boutique Hotel](#)

For a full list of other hotels in Rwanda please follow this [trip-advisor link](#).

Serviced Apartments

There are some serviced apartment in a few different areas of Kigali city. The prices range between \$800 to \$2000 per month depending on the neighborhood and the number of the rooms. Here are some of them:

Phoenix Apartment by LINK

- Tel: +250 783 667 606
- Email: info@phoenixplaza.rw

Glads Apartments

- gladsapartment@gmail.com
- +250 788 354 475

Grazia Apartments

- Tel: +250 788 862 351
- graziaparts@gmail.com

Follow this [google map link](#) to explore other apartments in Kigali.



Restaurants

There is a variety of cuisines and restaurants, with new places opening all the time. In Kigali most restaurants are located in Kiyovu, Kimihurura, Kibagabaga, Kisimenti and Nyarutarama. Here is a list of the most popular restaurants in Kigali:

- [The Hut](#)
- [Java House \(Kigali Heights\)](#)
- [Meze Fresh](#)
- [Pili Pili](#)
- [Sola Luna](#)
- [Poivre Noir](#)
- [BWoK Cafe Bistro](#)
- [Habesha Ethiopian Restaurant](#)
- [Soy Asian Table](#)
- [Khana Khazana Nyarutarama](#)
- [Borneo Indonesian Restaurant](#)
- [Kijamii Table](#)

Other good and local restaurants which are not listed above can also be an option to explore.

Coffee Shops

Cafes also tend to be located in these areas as restaurants. Here is a list of the most popular coffee shops where you could go have a drink and work on your laptop.

- [Rubia Coffee Roasters](#)
- [Question Coffee](#)
- [Bourbon Coffee](#)
- [Cafe Camellia \(has multiple branches\)](#)
- [Brioche \(has multiple branches.\)](#)
- [Aromas Coffee](#)
- [The Women's Bakery](#)
- [Inzora Rooftop Café](#)





Night Life in Kigali

Night scene (bars, nightclubs, live music events, happy hours and other social events) in Kigali is blooming especially on the weekend (Friday and Saturday). These are some of the most popular night life places in Kigali

- [Kisimenti Stone Road street](#)
- [Biryogo Car Free Zone](#)
- [Down Town Car Free Zone](#)
- [Sundowner bar](#)
- [Pili Pili](#)
- [Papyrus](#)
- [Molato Restaurant & Bar](#)
- [Chez Lando Hotel Bar](#)

Breweries and Beers in Rwanda



Bralirwa Plc is subsidiary of Heineken N.V. and license holder of The Coca-Cola Company. Through the years, Bralirwa beer portfolio has grown in tandem with the Rwandan society and currently includes the following beers:

- [Primus](#)
- [Mützig](#)
- [Mützig Class](#)
- [Legend](#)
- [Amstel Malt](#)
- [Turbo King](#)
- [Heineken](#)



SKOL Brewery Limited started productions in Rwanda in 2010. Currently, SBL produces 5 brands in various packaging types. Below is the list of the Skol beers:

- [Skol Select](#)
- [Skol Malt](#)
- [Skol Lager](#)
- [Skol Gatanu](#)
- [Virunga](#)
- [Panache](#)



A photograph of a Black man with short, dark hair and glasses, wearing a dark t-shirt, leaning over a white table and reading an open book. His hands are visible, turning the pages. To his right, a stack of five books is visible, with titles like 'THE LEADER' and 'THE BURNING' partially legible. Next to the books is a black JBL earbud case and a pair of black earbuds. The background is a plain, light-colored wall.

Schools, Bookstores & News

Bookstores

These are some of the bookstores in Kigali with a wide range of books in both English and French:

- [Librairie Ikirezi Bookshop](#) in Kacyiru,
- [Charisma Bookstore](#) in Kigali Heights,
- [Librairie Caritas](#) is located in the city centre (Avenue du Commerce) and offers a variety of books mostly in French.
- [Patchwork](#). Run by Carolyn Ransom, the bookstore sells a variety of used books in Kigali.

Library

[The Kigali Public Library](#) is located next to the American embassy in Kacyiru, with a wide book selection.

Newspapers

The most popular news sites are:



Rwanda Education System

Rwanda operates on a 6-3-3-4 system: Primary School 6 years, Junior Secondary School (Ordinary level) – 3 years, Senior Secondary School (Advanced level) – 3 years and University Bachelor's degree – 4 years

English is used as a language of instruction in primary school through University. Kinyarwanda is used as a medium of instructions in public primary school (P1-P3) and English from P4 through University. French and Swahili are taught as an elective or a supplemental subject in public primary and secondary schools.

Some private primary and high schools have both Francophone and Anglophone systems which use French or English, respectively, as languages of instruction at any and all grade levels. Students in these schools take either language as an elective or a supplementary subject. [The US Kigali Education Advisor Information Resource Centre](#) has more information about the Rwanda education system



Private International Schools

With the growing community of expats in Kigali, the number of good private schools with international programs has significantly increased. Here is a list of schools worthy of exploring:

1. [Kigali International Community School](#)
2. [Green Hills Academy](#)
3. [International School of Kigali](#)
4. [Discovery International School](#)
5. [The Earth School Africa](#)
6. [Hagos International School](#)
7. [Iwacu Academy](#)
8. [Kigali Parents' School](#)
9. [King David Academy](#)
10. [Silver Belles](#)



Recreation & Sports

Official Holidays In Rwanda

The following are the holidays observed in Rwanda. When an official holiday falls on a weekend, the following Monday is always an official holiday. Islamic holidays are subject to moon sightings and will be announced just the day before. Ministry of Public Service and Labour communicates holidays mainly on twitter. However if you are working in Rwanda always check with your organization's human resource department to confirm the holidays. Here below are the most important holidays in Rwanda:

- 1st January: New Year's Day
- 2nd January: Day after New Year's Day
- 1st February: National Heroes Day
- Good Friday
- Easter Monday
- 7th April: Genocide against the Tutsi Memorial Day
- 1st May: Labor Day
- 1st July: Independence Day
- 4th July: Liberation Day
- First Friday of August: Umuganura Day
- 15th August: Assumption Day
- 25th December: Christmas Day
- 26th December: Boxing Day
- EID EL FITR: the date is announced each year by Rwanda Muslims Association;
- EID AL-ADHA: the date is announced each year by Rwanda Muslims Association

Yoga

There are a handful of yoga classes in Kigali. The most well known are [Yego Yoga](#) at Inema Art Center, [Ituze Mindful and Yoga Center](#) and [Yoga For All](#) at The Earth School Rwanda.

Gym

Most hotels have gym facilities (offering aerobic classes and others), including The Manor and Nyarutarama Tennis Club, all with varied membership fees. The Amahoro Stadium has a gym as well as other sport facilities.

Horse Riding & Ziplining

There are a few horses for hire in Kigali. [Fazenda Sengha](#) run by Barbara, 0788551787 offers horse ride experiences at Mont Kigali which will give you a spectacular view of Kigali. Fazenda also offers a lot of other fun activities including ziplining that will make you scream and give you goose pumps

SPA

Here are some of the SPAs in Kigali

- [Serena Maisha SPA](#) at Kigali Serena Hotel, KN 3 Ave, Kigali
- [Le Spa Kigali and unisex salon](#) at KG 543 St, Kigali
- [Maka & Yura Kigali](#) at 23 KG 280 St, Kigali
- [Zenora Wellness Center](#) at 92 KG 28 Ave, Kigali

Football

The occasional games played at Amahoro stadium in Remera and Pele Stadium in Nyamirambo attract huge crowds. In Cercle Sportif, there is a full size grass field for rent for occasional matches. For children, [Dream Team Football Academy](#) organizes paid football games on Saturdays and holidays.

Golf

[KIGALI GOLF Resort & Villas](#) has 18-hole course that offers an exciting experience even for experienced golfers. It hosts a variety of tournaments, golf lessons and many events. You can email them at contact@kigaligolf.rw or call them at 252 500 000.

Squash and Tennis

Tennis is a well-practiced sport in Kigali by locals and expats. Tennis courts and trainers are available in various tennis clubs. Here are some of the Tennis clubs in Rwanda:

- [Cercle Sportif de Kigali \(CSK\)](#),
- [Nyarutarama Tennis Club](#),
- [Tennis Club Musanze](#)
- [Hotel Serena Gisenyi](#)
- [University of Rwanda Huye](#)

For more information about tennis courts and games please visit the [Rwanda Federation of Tennis website](#) or call them at this number: +250 788 302 588

Basketball

Most of the big basketball matches happen at the The BK Arena. BK Arena is an indoor built and finished in 2019, other than basketball matches the Arena hosts many events and concerts. It is believed to be the biggest indoor arena in East Africa.

Volleyball

Like football, tennis and basketball, volleyball is a big game in Rwanda. There are female and male clubs. If you want to play volleyball in Kigali then these two places will be your good start:

- [Mamba Club](#)
- [Cercle Sportif](#)

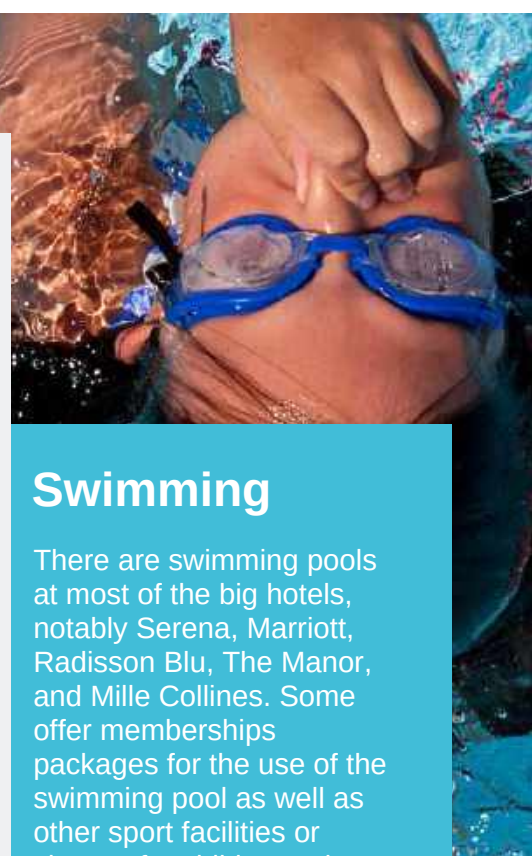
Swimming

There are swimming pools at most of the big hotels, notably Serena, Marriott, Radisson Blu, The Manor, and Mille Collines. Some offer memberships packages for the use of the swimming pool as well as other sport facilities or classes for children, others only allow payment for day entrance. There are also swimming pools at the sports clubs (Cercle Sportif, Nyarutarama Tennis Club) that require membership.

Cricket

Cricket is a relatively new sport in Rwanda. The Rwanda Cricket Association was formed in 1999 and the game is now played by almost 5,000 individuals.

[Gahanga Cricket Stadium](#) located about half an hour outside Kigali (in the picture below) is the Rwanda's first proper cricket ground





Recreation Facilities for Children

Outside of schools there are few recreation facilities for children in Kigali. Here are some of activities for young children:

- [Spiderman Game Center](#): In addition to a variety of games which simulate car racing, airplane flights and basketball, the Spiderman Game Center features a padded play area, ball pit and carousel for children. Parents and friends can enjoy a meal, coffee, or dessert in the gated child-friendly space. You can also book the space for private parties and events. They are in Masaka (Near Masaka hospital). They can be reached at +250 78 715 77 98.
- [Play Area at Monaco Cafe](#): Inside T2000 in the city center is one of Kigali's hidden treasures and the #1 activity for children under 7 as voted by parents in Kigali. At the back of the Monaco Cafe you'll find a large play area complete with everything from multiple slides and swings to a ball pit and lots of padded play space for kids to run, jump, and climb all afternoon. They can be reached at + (250) 07 827 566 06.
- [City Arts Classes](#): With creative classes for children and adults, City Arts offers ballet, art, yoga and creative writing and serves as a local community arts center. They located at KG 672 #18, Kings Hostel, Kimihurura. They can be reached at 0784 444 569.
- [Tedga's Recreation Center](#): Located in Gahanga about 3 kms from Kicukiro Distric office, Tedga's has a big space with a variety of children games.
- [Sanitas Leisure Park](#) is located at Kanombe, Nyarugunga, KK102 St. It is one of the biggest recreation space for children with inflatable/bouncing castles and a restaurant/bar that parents use as they watch their children playing.
- [Nature Kigali Restaurant](#) is in Nyarutarama close to RDB. The children playground offers children an amazing experience such as the trampoline, swings, sandbox, climbing bars and free play activities.
- [Acucus Park](#). Located in Kabeza at KK 293 street, it has big playground with pools, slides go-karts, and so many other children toys and activities.



Tourism, Events and Festivals

Gorilla Trekking

There's no better place to getting up close to gorillas (who share 99 percent of our DNA) than Rwanda. Rwanda has made serious strides in conservation to protect the animals. You can get a gorilla-trekking permit from the Rwanda Development Board office at Gishushu. Musanze (home of the volcanoes and gorillas) is also home to spectacular scenery, particularly the Twin Lakes.

Lake Kivu

Lake Kivu is one of the African Great Lakes. It lies on the border between Rwanda and the Democratic Republic of the Congo. Along the lake border are a series of towns that are well worth a visit:

- The **town of Karongi** is located in the central area of Lake Kivu, and as far as aesthetics go for a lakeside town, this is the 'prettiest' of them all. The town is relatively small and offers fantastic views out to the expansive lake and the small islands it homes.
- The **town of Rubavu** situated on the northern edge of Lake Kivu's border is one of the most popular towns to visit with a hub of lakeside hotels and bars. Rubavu offers watersport activities out on the lake, and there is an average beach in the town.

Akagera National Park

Akagera National Park Rwanda is found in North Eastern Rwanda, at the country's border with Tanzania. It is dominated by swamps and beautiful lakes which create a piece of spectacular scenery. It is quite a remarkable eco-system. Akagera is a home of elephants, lions, buffalos, hyenas, zebras, giraffe and several antelopes. There are a number of primates species found within this park such as the olive baboons, Vervet monkeys, and the nocturnal bush babies. The shallow waters of Lake Ihema are home to a large number of crocodiles and hippos which can best be viewed during boat rides.

More Places to Visit

Please follow this link to see other touristic destinations you should visit in Rwanda.
<https://www.visitrwanda.com/tourism/destinations/>



Recurring Events

Kwita Izina: The Gorilla Naming Ceremony

The birth of a baby is considered a momentous occasion in Rwanda, with each newborn presented to the public amongst a tumult of happiness and praise. And this tradition even extends to gorillas.

For an experience unlike any other, attend the Kwita Izina, the Gorilla Naming Ceremony, a country-wide event where baby gorillas are introduced to the local communities, formally named and celebrated.

The event is extremely popular, with gala balls held in honor of the ceremony throughout the country, and in recent times an increasing number of conservationists and celebrities have supported the celebration, and the strong importance it places on respecting, appreciating and monitoring wild animals. For more information visit the [organizer \(Rwanda Development Board\) website](#).



Umuganda: Community Work

Umuganda is a practice that is rooted in the Rwandan custom of self-help and cooperation. In traditional Rwandan culture, members of the community would call upon their family, friends and neighbours to help them complete a difficult task.

These activities might include: farming for those who were unable to do so due to either a physical handicap or old age; building houses for the poor or providing transportation to medical facilities for those who were in need.

In 1998, in an effort to rebuild Rwandan society and nurture a shared national identity, the government re-introduced Umuganda as one of its “Home Grown Solutions” to reinforce socio-economic development and to promote the use of cultural resources in mitigating the effects of scarce resources, as stated in the Vision 2020 programme. Umuganda is now always held on the last Saturday of the month from 8 am to 11 am.

The leaders of the village identify activities to be done and communicate it on Friday evening or Saturday morning using a microphone. Businesses are shut and the streets are empty while neighbours convene for collective work until 11 am.

Though sometimes local authorities do not make it mandatory for internationals in their neighborhoods to attend Umuganda, your neighbors and village leaders will be very happy to see you joining them in Umuganda. And this is the best way to integrate in your neighborhood and break the strangeness. To know the program of Umuganda in your neighborhood, you can call or text one of your village leaders.



Car Free Day

Every first and third Sunday of the month from 7 am to 10 am some roads in Kigali are closed for motorized vehicles and can only be used only for walking and cycling.

This initiative was introduced to promote sport culture and healthy lifestyle. The Car Free Day package sometimes includes a free medical check-up to prevent non communicable diseases.





EVENTS

Kigali peace Marathon

Kigali Peace Marathon is organized by Rwanda Athletics Federation (RAF) every year in partnership with other government and non government organisations. The full marathon distance for race completion is 42,195Km while half marathon is 21,098Km. The marathon started in 2004 as an amateur race to use sports in the healing and reconciliation process in the aftermath of the 1994 Genocide against the Tutsi, the event has grown to become one of the most respected annual athletics events in the region.

Nyungwe Marathon

The marathon started in 2012 with only 15 runners and now over 400 people run together and can enjoy the beauty of Nyungwe forest. The marathon does not give out trophies for first place nor features bib numbers or timing chips. It deliberately keeps things simple to focus on the running, the people, and the forest.

Umuganura

Traditionally, Umuganura was one of the most important ceremonies celebrated by Rwandans at the beginning of every harvest season to celebrate the country's harvest both at the kingdom and family levels. Today, it has evolved to become a national festival to celebrate the country's achievements in line with its vision for a more cohesive, united, peaceful and prosperous future.

Kigali Fashion Week

Kigali Fashion Week is an annual fashion event that takes place twice a year. It is a platform that promotes Rwandan creative industry in fashion and modelling. The event attracts international attention with both designers and models from across the globe.

Tour du Rwanda

Tour du Rwanda is a road cycling stage race that takes place annually between the months of February and March. It is organized by the Rwanda Cycling Federation and attracts a lot of sponsors. The tour starts in Kigali and takes racers in different parts of Rwanda. It is classified under 2.1 race category.



Culture & Community

Art Galleries

There are several art galleries in Kigali that often host exhibitions and other activities in their spaces, in addition to selling their artwork. See the list on this [Google map link](#)

Cinemas

The cinema industry is considerably growing in Rwanda. Here are some cinema places you could go to in Kigali.

- [Century Cinemas](#)
- [Goethe Institute](#)
- [Institut Français](#)
- [CanalOlympia Rebero](#)

Museums

The [Kigali Genocide Memorial in Gisozi](#) is often the first stop for visitors to Rwanda. There are several other interesting museums and memorials in the country. For more information about museums visit www.museum.gov.rw.

Dance Classes

Here are some of the places you could go for traditional and modern dance classes:

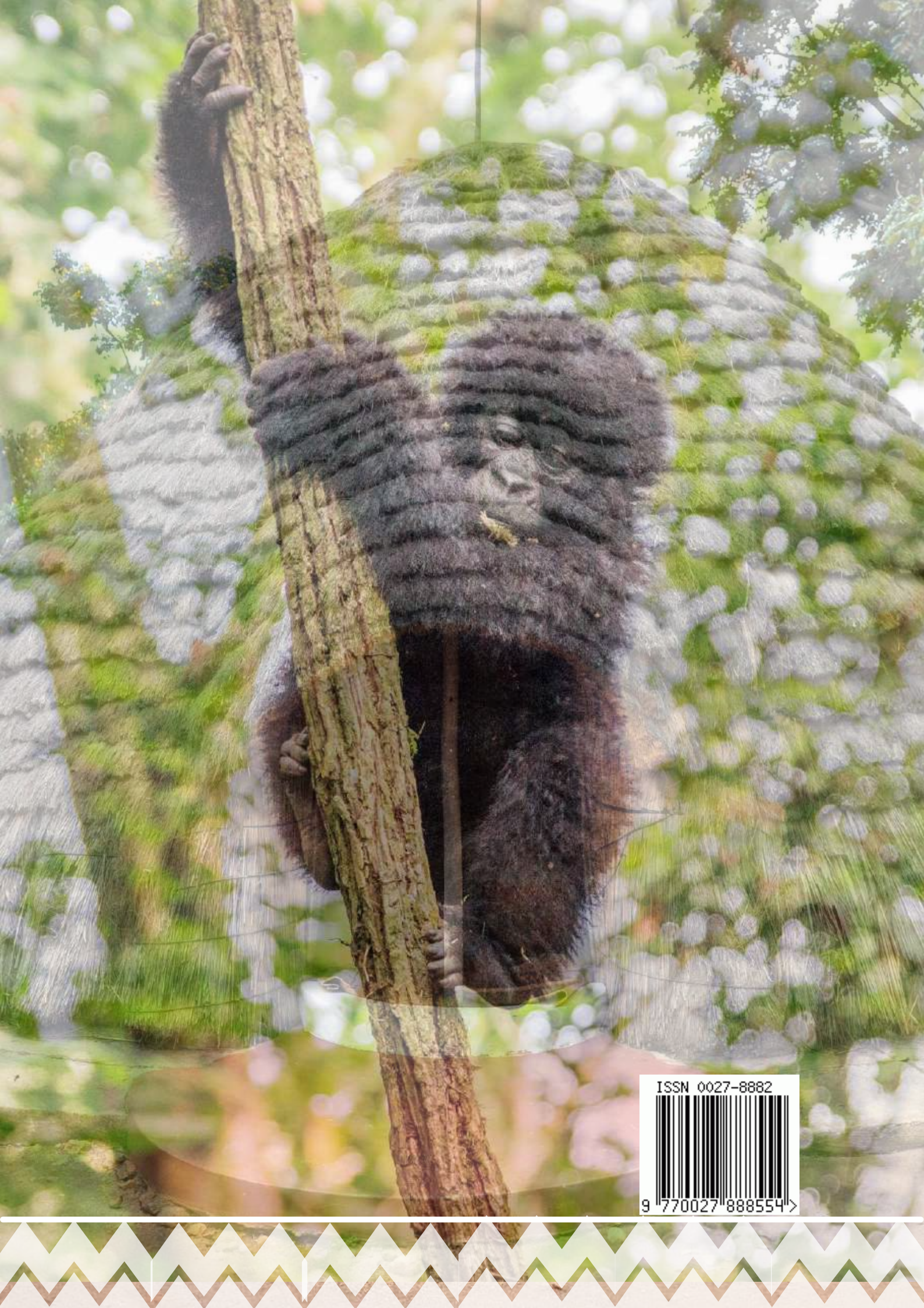
- [Inema Arts Center](#) holds youth dance and drumming groups several days a week at no cost. Primarily young people living near the art spaces attend these classes.
- [City Arts](#): Has many dances teachers that offer contemporary, jazz, ballet and acrobatics classes.

Quiz

The most popular quiz night (and a good way to meet people) is the pub quiz at the [Sole Luna](#) restaurant every week on Monday, starting around 7:30 p.m. There is also a regular quiz at the [White Horse](#) restaurant in Kiyovu opposite Norrsken Kigali House.

Imigongo (cow dung art) Experience

Imigongo is a Rwandan art form traditionally made by women using cow dung. Imigongo are often in the colors black, white and red. [Azizi Life](#) (in Muhanga) and [Imigongo Art Center](#) (in Kayonza) offer good experience where you spend time learning the art and interact with the artisans.



ISSN 0027-8882



9 770027 888554 >